

## VOLTA - STATION OVERVIEW

Volta provides free, turnkey electric vehicle charging services. This modern amenity attracts the community as Volta's charging network draws 3x the number of visits to the property as compared to other charging networks.\* Our stations have been installed in over 120 different municipalities across the U.S.

\*Flint Research

### VOLTA STATION BENEFITS

- Installation, equipment and maintenance is paid by Volta
- Charges all electric vehicles
- Electricity to charge community members' electric vehicle is free
- Free electricity supported through third party content on displays
- Charges up to 2 hours free with software that discourages abuse
- Volta stations are occupied 80% of the retail day
- Volta has provided over 60 million miles of free charging, replaced approximately 2.3 million gallons of gasoline and eliminated over 45 million pounds of CO2

### Charging Unit Information

Single charging units

Size: H 86.25" x W 32.5" x D 12.75"

Display Size: H 48" x W 27"

Cord length: 20'

Power Type: 208/240VAC, 40A, 10 kW max

Plug: SAE J1772 compliant connector

Listings: UL® E354307

### POWER REQUIREMENTS

Charging Unit: 50A/2P 208/240V breaker

Charging Aux Power: 20A/1P 120V breaker

Cell signal or LAN access required

### INSTALLATION REQUIREMENTS

Wire Diameter: #6 AWG\*

Larger for longer conduit runs

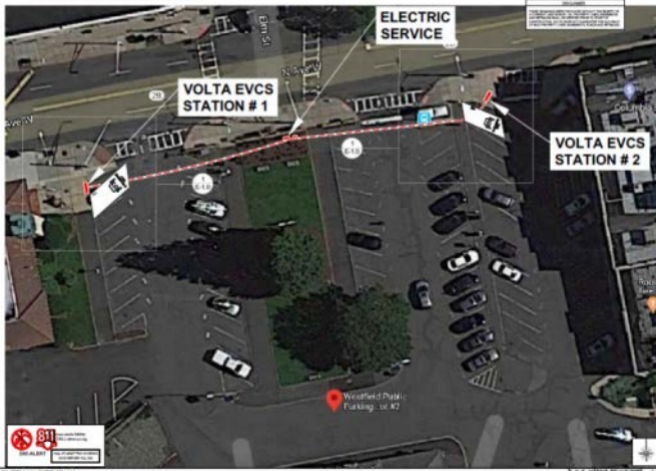
Conduit Diameter: 2"

\*Two Volta stations can share one 2" conduit



Volta's mission is simple: Accelerate electric vehicle adoption by building cutting-edge, free and inspiring vehicle charging networks.





**VOLTA EVCS STATION # 1**

**ELECTRIC SERVICE**

**VOLTA EVCS STATION # 2**

Weatherfield Pavilion  
Parking Lot A2

**811** Call before you dig. Dig safely. Dig smart. Dig right.

**ONE ALERT**

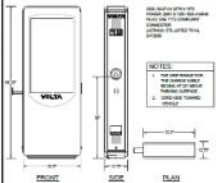
Call 811 to report a problem or to request a utility location. 1-800-4-A-SHIELD

**Model T24C Charging Station 205 240 V AC**

|                        |                              |   |                             |
|------------------------|------------------------------|---|-----------------------------|
| <b>General</b>         | <b>Load Rating</b>           | 205 to 240 Amp (max) 240 V AC                         |                             |
|                        | <b>Connection and Wiring</b> | 110V, 240V, 208V, 200V, 208V, 240V                    |                             |
|                        | <b>Grounding</b>             | 4-6 in.   |                             |
|                        | <b>Mounting</b>              | Compatible with standard 200V panel with 150 Ampacity |                             |
| <b>Physical</b>        | <b>Color/Finish</b>          | Black/White, Powder Coat, RAL 7016                    |                             |
|                        | <b>Material/Construction</b> | 304 SS (max) 1/2 in. (12.7 mm)                        |                             |
|                        | <b>Locking Device</b>        | Locking Device, 1/2 in. (12.7 mm)                     |                             |
|                        | <b>Physical Protection</b>   | Weather resistant enclosure with IP67 rating          |                             |
|                        | <b>Weather Resistance</b>    | IP67 (max) 1/2 in. (12.7 mm) with 150 Ampacity        |                             |
| <b>Code and Safety</b> | <b>UL Listing</b>            | UL 1008 (max) 1/2 in. (12.7 mm)                       |                             |
|                        | <b>Code Information</b>      | NEC 408.10 (max) 1/2 in. (12.7 mm)                    |                             |
| <b>Performance</b>     | <b>Operating Temperature</b> | 0°C to 50°C (32°F to 122°F)                           |                             |
|                        | <b>Humidity</b>              | 95% relative humidity, non-condensing                 |                             |
| <b>Dimensions</b>      | <b>Charging Cable Length</b> | 20 ft (6.1 m)   |                             |
|                        | <b>Mounting Provision</b>    | Type 25   |                             |
|                        | <b>Mounting Type</b>         | Wall Mount (Standard)                                 |                             |
|                        | <b>Mounting</b>              | 4-6 in.   |                             |
|                        | <b>Dimensions</b>            | Height: 12 in. (305 mm), Width: 4.5 in. (114 mm)      |                             |
|                        | <b>Net Weight</b>            | 15 lb (6.8 kg)  |                             |
|                        | <b>Features</b>              | <b>Features</b>                                       | UL 1008                     |
|                        |                              | <b>Charging Method</b>                                | AC 240V (max) charging rate |

**NOTES:**

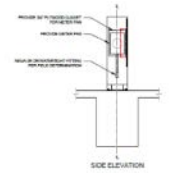
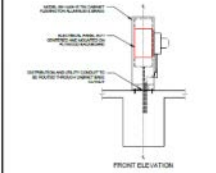
1. THE DIMENSIONS OF THE CHARGER AND OUTPUT CABLE ARE TO BE USED FOR ALL WIRING AND INSTALLATION PURPOSES.
2. THE DIMENSIONS OF THE CHARGER AND OUTPUT CABLE ARE TO BE USED FOR ALL WIRING AND INSTALLATION PURPOSES.
3. THE DIMENSIONS OF THE CHARGER AND OUTPUT CABLE ARE TO BE USED FOR ALL WIRING AND INSTALLATION PURPOSES.
4. THE DIMENSIONS OF THE CHARGER AND OUTPUT CABLE ARE TO BE USED FOR ALL WIRING AND INSTALLATION PURPOSES.

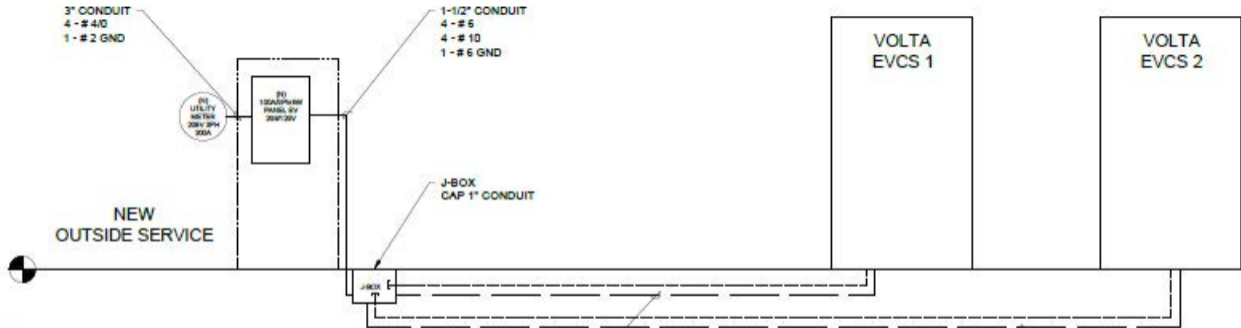
**CHARGER SPECIFICATIONS**


SEE SPECIFICATIONS FOR CHARGER AND OUTPUT CABLE CONNECTIONS. THE CHARGER AND OUTPUT CABLE MUST BE USED FOR ALL WIRING AND INSTALLATION PURPOSES.

**NOTES:**

1. THE DIMENSIONS OF THE CHARGER AND OUTPUT CABLE ARE TO BE USED FOR ALL WIRING AND INSTALLATION PURPOSES.
2. THE DIMENSIONS OF THE CHARGER AND OUTPUT CABLE ARE TO BE USED FOR ALL WIRING AND INSTALLATION PURPOSES.


**VOLTA EVCS DETAIL**
**SCALE: 2**
**(NOT USED)**

**SCALE: 1**



NOTE:  
TIE TO EXISTING GROUND GRID. IF  
EXISTING GROUND GRID IS NOT  
AVAILABLE PROVIDE NEW 3/4"  
DIAMETER 10' COPPER GROUND ROD.  
PROVIDE SYSTEM BOUNDING JUMPER.  
FOLLOW NEC ARTICLE 250.

1-1/2" CONDUIT  
1" COND. (3P)  
2 - # 6  
2 - # 10  
1 - # 6 GND

1-1/2" CONDUIT  
1" COND. (3P)  
2 - # 6  
2 - # 10  
1 - # 6 GND